



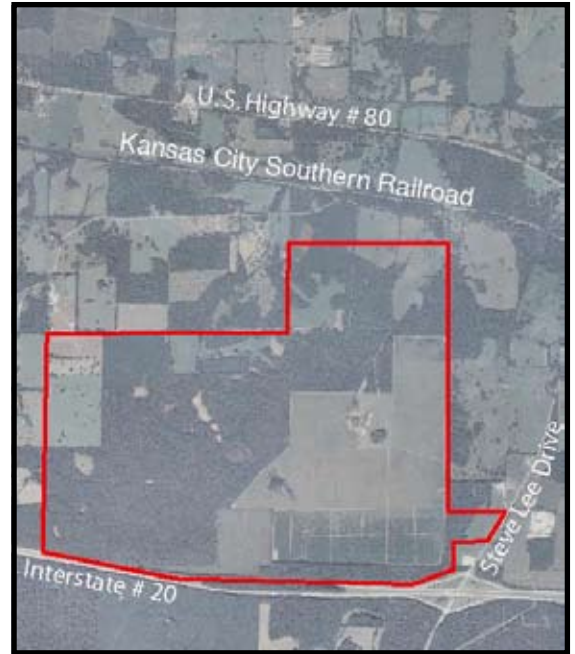
Wooten-McGee Industrial Site - 1,400 Available Acres

Location

Steve Lee Drive
Lake, MS 39092
(Scott County)

Property and Area Description

The Wooten-McGee Industrial Site is located in eastern Scott County near the Town of Lake. It contains approximately 1,400 acres and is adjacent to Interstate 20. It lies approximately 45 miles east of Jackson and 35 miles west of Meridian. Rail service is available from the Kansas City Southern Railroad. Jackson International Airport is less than 40 minutes from the site. All utilities are available.



Site Details

Total Acres: 1,400	Zoning: None
Available Acres: 1,400	Adjacent Avail. Acres: 216
Largest Tract Available: 1,400	Setting: Agricultural Land
Topography: Flat	Within City Limits: No

Owner

Wooten, McGee

Transportation

Nearest Interstate: Interstate 20 - Adjacent
Nearest 4-Lane Highway: Interstate 20 - Adjacent
Nearest Commercial Airport:
 Meridian Regional Airport - 35 miles
 Jackson International Airport - 45 miles
Rail Served: Yes, Kansas City Southern Railroad

Utilities

Electric Distribution: Southern Pine Electric Power Association and Central Electric Power Association
Gas Distribution: CenterPoint Energy
Telecommunications Local Service Provider:
 AT&T dominant provider. Infrastructure to site in place.
Sewer: Town of Lake
Water: Town of Lake

Contact

Newt Ishee
Mid-Mississippi Development District
P. O. Box 119
Newton, MS 39345
Phone: 601-683-2091
Fax: 601-683-2092
Email: newt@mmdd.org
Website: www.mmdd.org